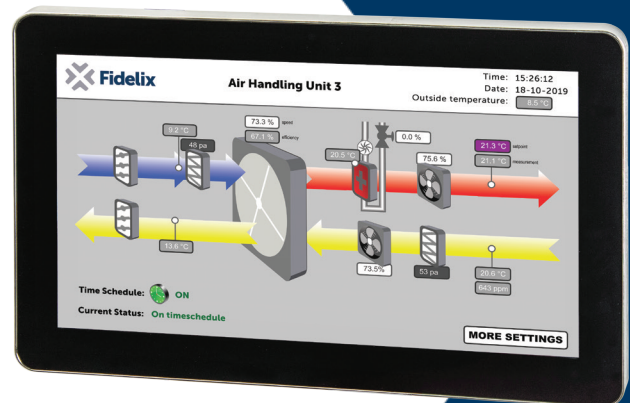




Fdx Compact Visio-15-X

15.6" touchscreen HMI for Fidelix BMS

- Full HD HMI running Android
- Multi-touch support
- Ethernet and Wi-Fi connection
- User friendly built-in application to connect to Fidelix-controllers



Connect and visualize

The Visio-15-X touch screen Human Machine Interface display is an easy way to view and control your Fidelix BMS. The panel can be used to access Fidelix controllers in the same network.

The panel can be freely installed either on a controller cabinet or away from the controller closer to the users.

Providing easy access and a fast connection to the controllers, the panel is the perfect way to facilitate maintenance or support personnel in their handling with the building's systems.

With the integrated Fidelix VisioApp, configuring and using the Fidelix BMS is fast and easy.

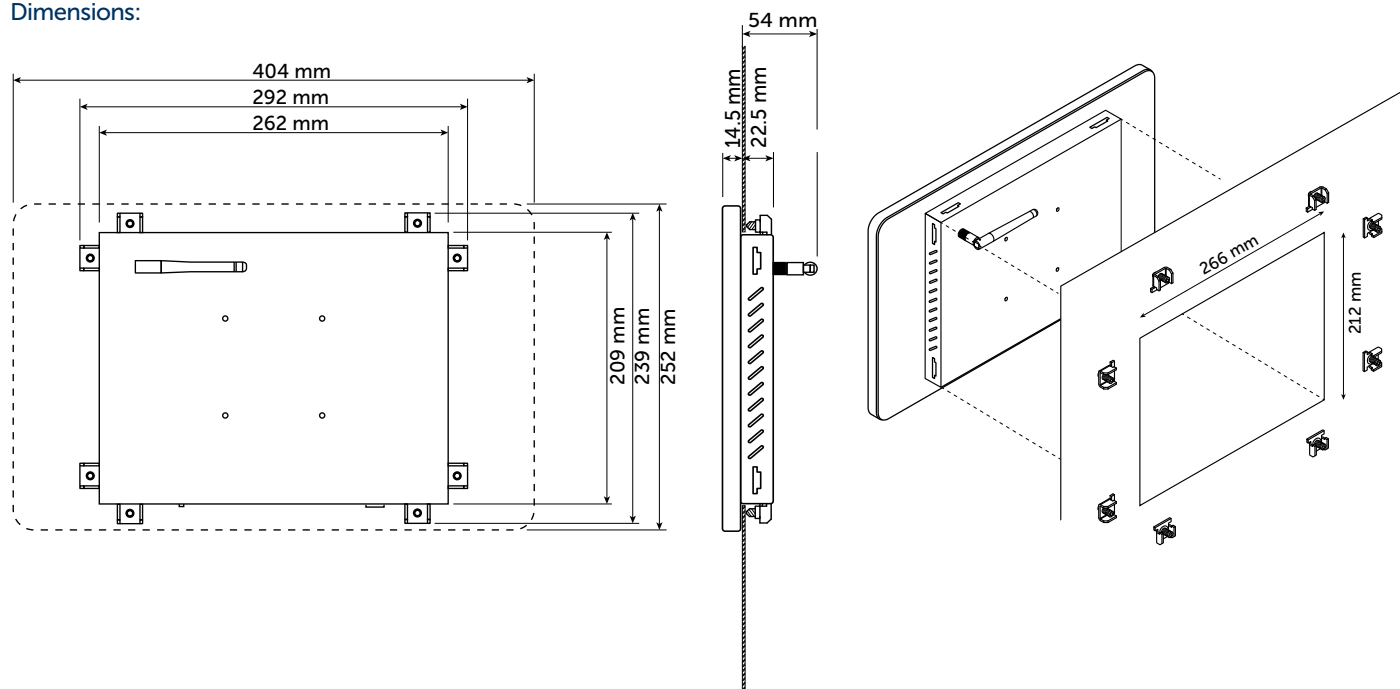


The Visio-15-X HMI completes the Fidelix building management system with a clear and easy user interface

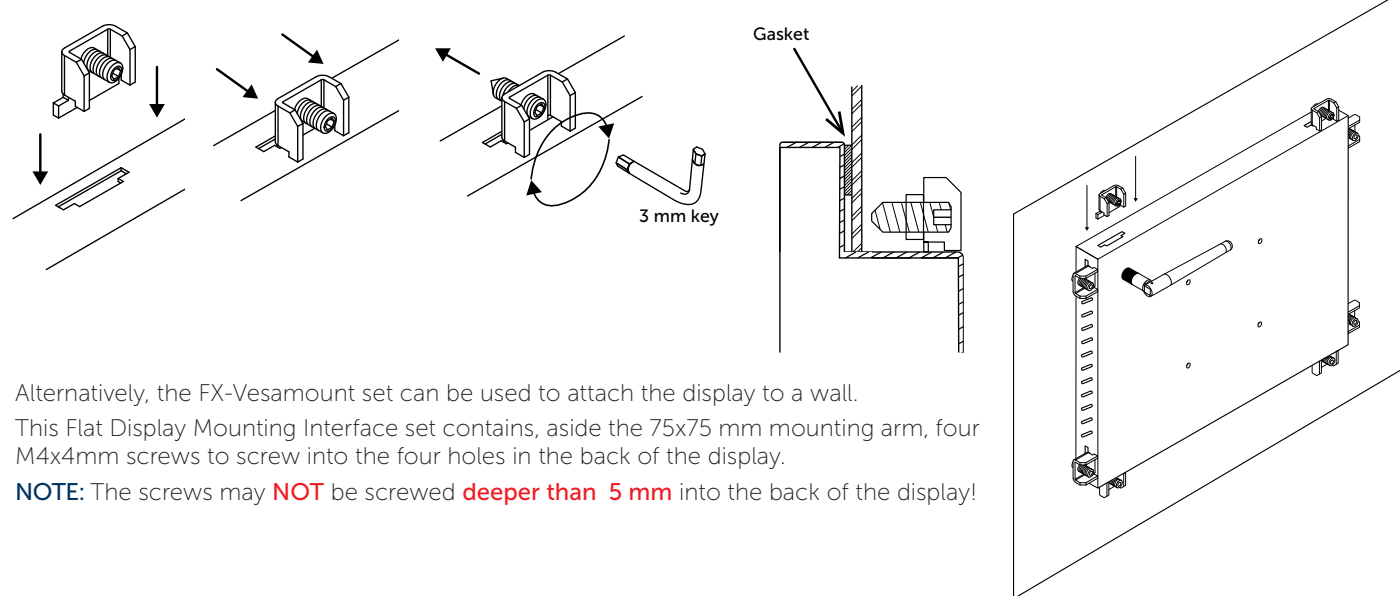
Screen size: 15.6"
Aspect ratio: 16:9
Resolution: 1920 * 1080 pixels
Viewing angle: 85/85/85/85 degrees
Number of colours: 16.7 million
Contrast ration: 800:1
Brightness: 300 cd/ m²
Power supply voltage: 24 VDC (+/- 10%)
Power consumption: max. 750 mA (typically < 500 mA)
(max. 18W @ 24 VDC)

CPU: Rockchip RK 3566, Quad-core Cortex-A55 1.8GHz
RAM: 2 GB DDR3
Storage: 16 GB NAND flash
OS: Android 11
Card slot: µSD cards up to 32 GB
Wi-Fi: 802.11b/g/n
Ethernet: 10/100 Mbps autodetect
USB: 2 x USB
IP-class: 44 (when door mounted)

Dimensions:



Installation:



Connections:

