



FX-Spider-40

Central control unit with 40 I/O's

- 40 integrated I/O-points with Modbus RTU RS-485
- 5.7" touch screen
- integrated HTTP & FTP-server
- optional GSM or 3G modem
- TCP/IP through ethernet (RJ45) for remote control



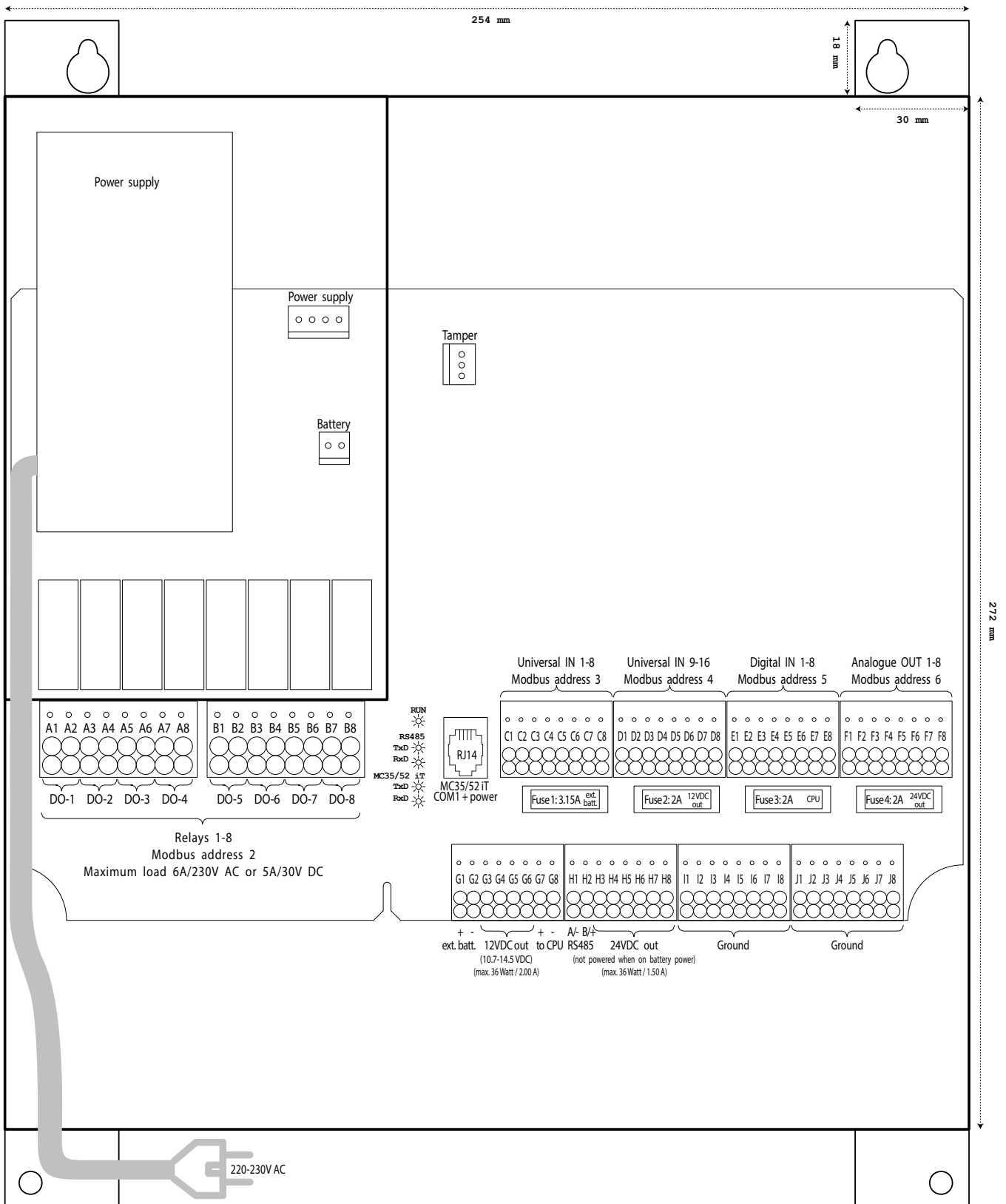
Fast, intelligent, clear and easy-to-use local control

The Spider-40 central controlling unit for building automation and security applications is a special version of it's big brother, the FX-2030a. Dedicated for small processes, narrow spaces and all-in-one solutions, it features a 5.7" touch screen showing HTML-graphics, a powerful processor to run PLC-code, and 40 built-in I/O-points, thus being everything you need to get your project up and running. The Spider-40 uses the IEC-61131-3 standards for PLC programming.

Connect the European standard CEE 7/7 plug to a normal 220/230V socket and get going in no time to discover the true meaning of plug and play!

Technical features

Size (with casing):	254mm x 272mm (x 144mm height)
Operating voltage:	100-240 VAC
Operating temperature:	0 to +40°C
I/O ports:	8 DO, 16 UI, 8 DI, 8 AO
Outputs:	12 and 24 VDC for equipment, 0(2)-10 V for AO's
Maximum load:	6A @ 230 VAC or 5A @ 30 VDC

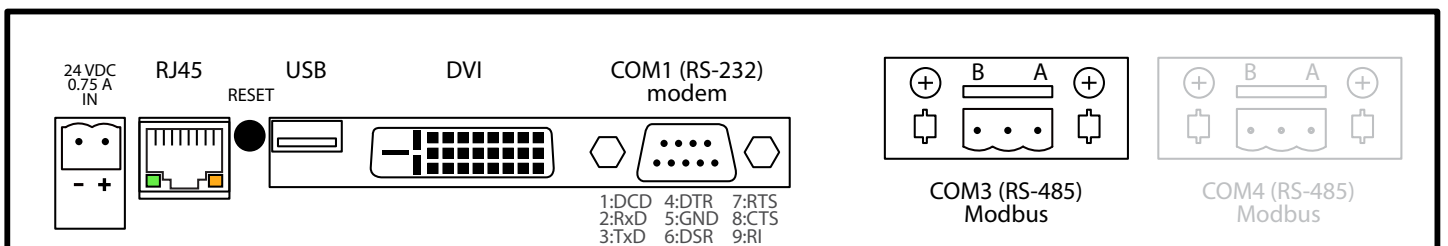
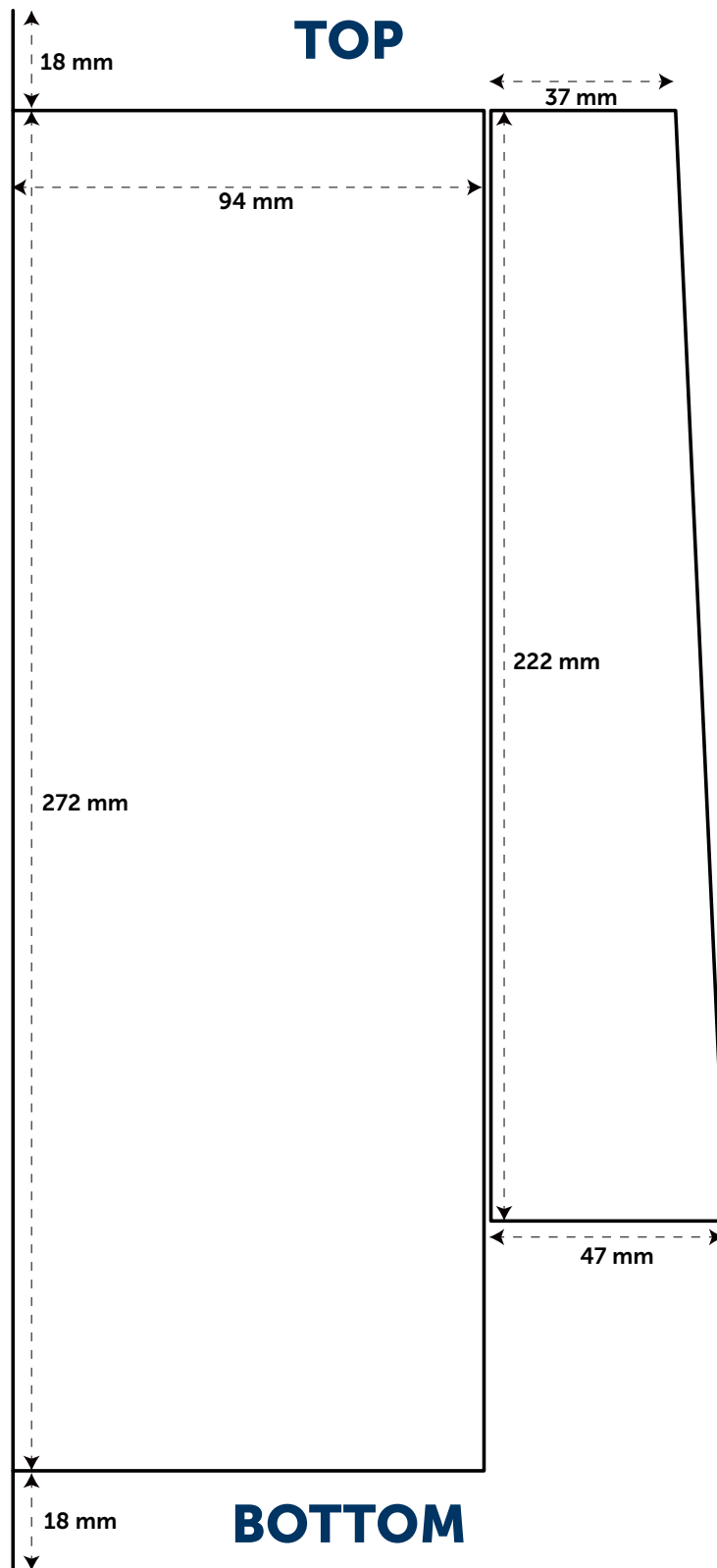


Important notices:

- Connect 0.2-2.5 mm² cables to connectors A and B, and 0.2-1.5 mm² cables to connectors C-J.
- All relays are of the Normal Open type. Please leave one relay empty between the relays to which you connect 230 V and the ones to which low voltage is connected.
- Universal Measurement points (C1-D8) are measured with approximately 3 second intervals.
- Analogue Outputs (F1-F8) send out 0-10V with an impedance of 1k Ω , at maximum 10 mA.

When battery powered:

The 24V output to the CPU (G7-G8) will only get 12V, the other 24V outputs (G3-G6) will not be powered. The screen will be switched off unless actively being operated upon. Relays and analogue outputs will also not be operated anymore. When the battery power supply drops below 10.8V, the system will shut itself off. The internal battery capacity provides approximately 12 hours of power, including 100 mA @ 12V for security field devices.



CONNECTORS UNDERNEATH SCREEN / CPU UNIT

