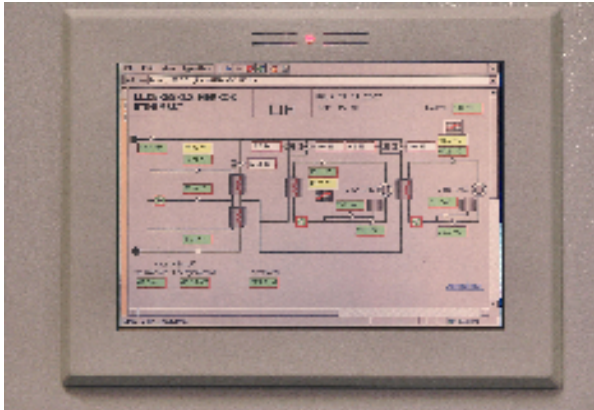


General



- Windows CE5.0 –operating system
- Processor AMD GX2 333 MHz
- 128 MB Compact Flash
- 128 MB RAM
- Ethernet-connection
- Web-server
- 10.4” touch screen
- Occupance sensor
- Alarm led

Description

Freely programmable Fx-2025 Substation is based on industrial PC and Windows CE5.0 operating system. Fx-2025 user interface is easy to use browser based interface. Dynamically updating web graphics are easy to made using FideGraf editor. System programming is done using powerfull FideProg programming environment. FideProg is standard IEC 61131-3 compliant. Integrated occupance sensor automatically drives the display to the on/off mode. Alarm led above the display shows actual alarm situation.

Technical data

Operating voltage:	5 VDC / 3 A
Operating temperature:	0 °C – 50 °C
Operating RH:	Max 95 %RH, no condensation
Size:	290 mm x 235 mm x 60 mm
Weight:	3,0 kg
Protection class:	IP21
Connections:	2x Ethernet RJ-45, RS-485 Modbus, RS-232, 2x USB PS-2, VGA
RAM:	128 MB
Flash-RAM:	128 MB (industrial)
Processor:	AMD GX2 333 MHz
Alarm led:	blinking red = unacknowledged alarm static red = acknowledged alarm green = no alarms
Ordering code:	FX-2025-BASIC (= CPU without display) FX-2025-10.4 (= CPU including 10,4” display)

Fidelix Oy is continuously developing its products and reserve the right to make changes in its products without prior notice.